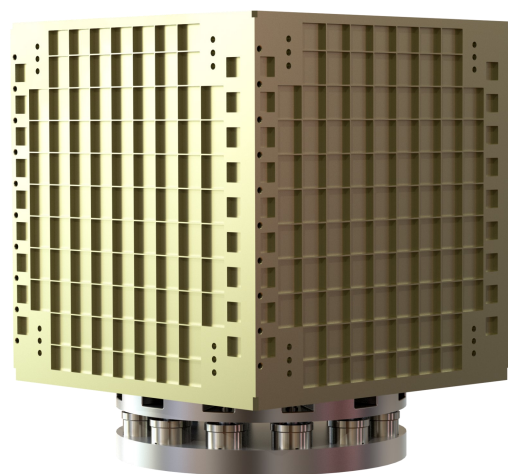
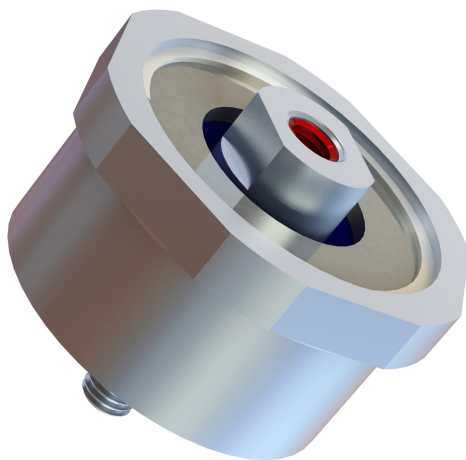


# CubeSat Isolation



## CubeSat Applications

- Geospace and Atmospheric Research
- Space Validation of Earth Science Technologies (InVEST)
- Astrophysical Measurements
- Navigation
- Advanced Exploration
- Earth Remote Sensing
- Research and Development
- Communication



*27U CubeSat shown above with a 12 mount isolation assembly.*

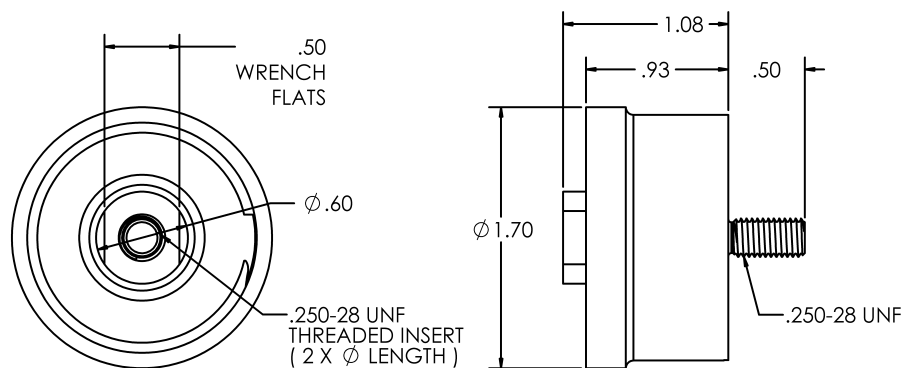
**For additional information and product support, call or e-mail:**

Phone: +1 (845) 368-8600

Email: [info@shocktech.com](mailto:info@shocktech.com)

## Design Features

- Unique design with varying stiffness and damping ratio.
- Isoelastic and equal stiffness in all axes.
- Meets NASA's outgassing requirements:
  - Total Mass Loss (TML)  $\leq 1.0\%$
  - Collected Volatile Condensable Material (CVCM)  $\leq 0.1\%$ .
- Wrench flats incorporated in the isolator design for ease of assembly.
- Adaptable to high installation torque values.



### Material

Housing: 300 Series CRES  
Core: 7075-T6 Aluminum  
Resilient Element: Elastomer

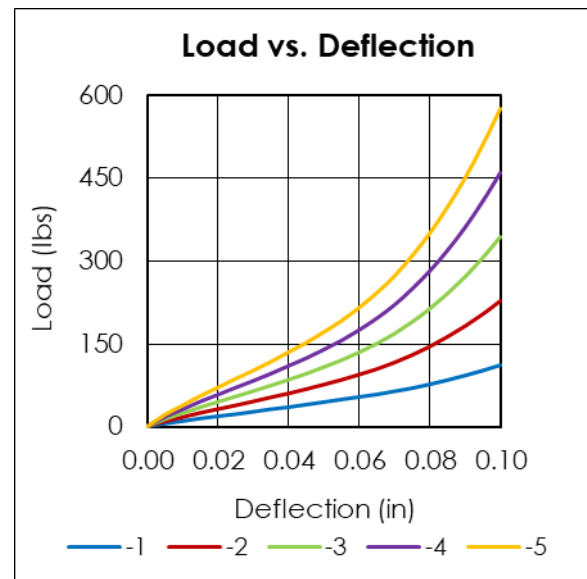
### Linear Displacement

Axial: 0.15in  
Radial: 0.12in

## Additional Options

- Custom designed/built to meet application distinct requirements.
- Can have metric threads & locking insert.
- Varying mounting thread; 1/4-28 UNF, 5/16-24 or 3/8-24.
- Eliminate the need for staff to accompany the equipment to the launch site.

*Load vs. Deflection data for various dash numbers (stiffnesses) shown to the right.*



## Isolator Selection Assistance

Shock Tech will provide the end user with isolator selection recommendation along with brief dynamic analysis where environments are available along with weight of the suspended unit.