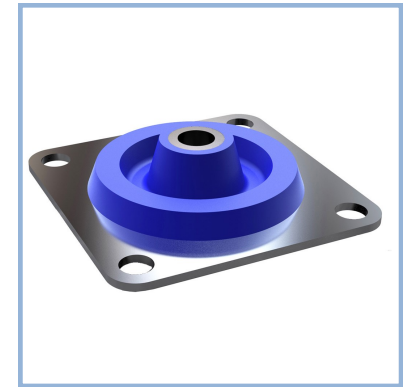
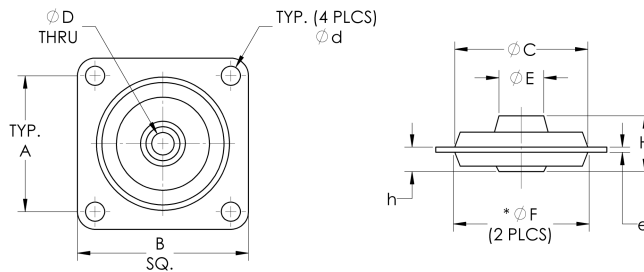


* RECOMMENDED WASHER
OR EQUIPMENT



| Part Number | Dimensions in inches | | | | | | | | | |
|-------------|----------------------|------|------|------|------|------|------|------|------|------|
| | A | B | Ø C | Ø D | Ø E | Ø F | H | Ø d | e | h |
| CP15 | 1.00 | 1.26 | 0.98 | 0.18 | 0.33 | 0.98 | 0.41 | 0.16 | 0.04 | 0.18 |
| CP16 | 1.375 | 1.75 | 1.38 | 0.22 | 0.51 | 1.38 | 0.57 | 0.18 | 0.06 | 0.24 |

Table 1: Values for Dimensions in Drawing

| Part Number | Load Rating (lbs.) |
|--------------------------------|--------------------|
| CP15-S38 | 0.4 |
| CP15-S55 | 0.6 |
| CP15-S63 | 0.9 |
| CP15-S77 | 1.1 |
| Max Transmissibility: 4 | |

| Part Number | Load Rating (lbs.) |
|--------------------------------|--------------------|
| CP16-S42 | 0.7 |
| CP16-S48 | 0.9 |
| CP16-S63 | 1.3 |
| CP16-S72 | 1.5 |
| CP16-S77 | 1.8 |
| Max Transmissibility: 4 | |

Table 2: Performance Characteristics

Materials:

- Metal Parts: Stainless Steel
- Resilient Element: VHDS Silicone

Operating Temperature:

- -60°F to 300°F

Natural Frequency:

- 15 to 20 Hz

Axial/Radial Frequency Ratio:

- 1 : 1.4 Approximately

Weight:

- CP15: 0.32 oz
- CP16: 0.96 oz

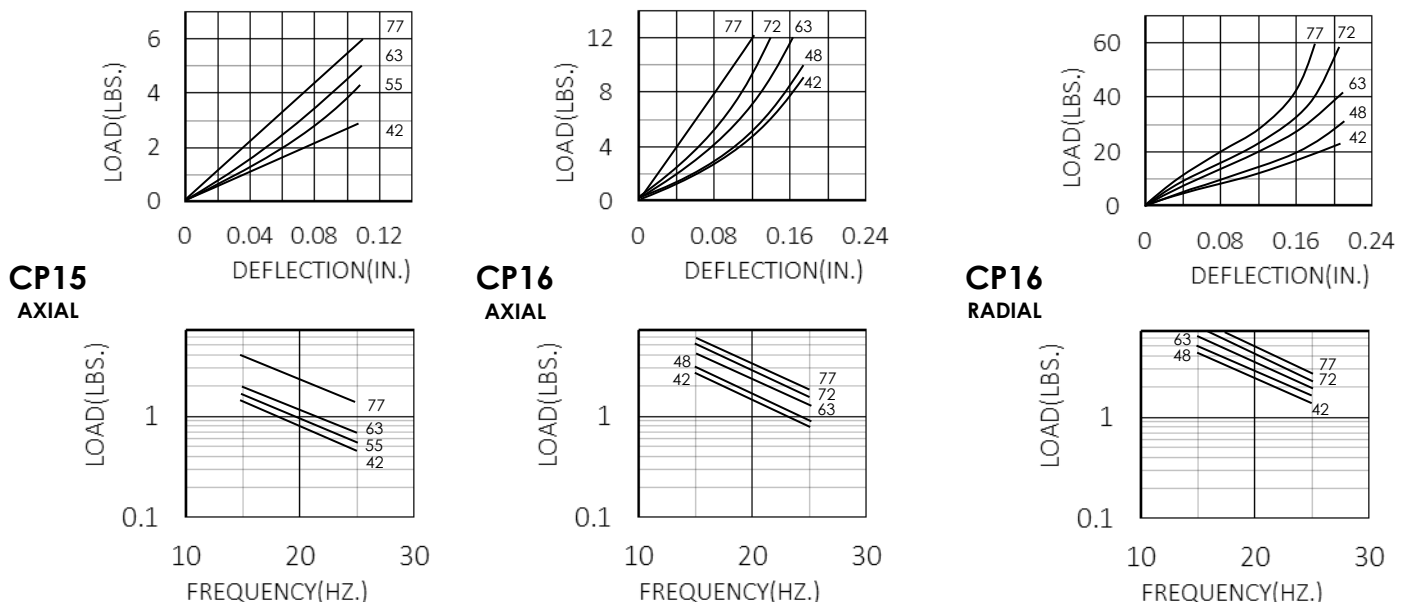


Figure 1: Load Vs. Deflection (Top) and Load Vs. Natural Frequency (Bottom)