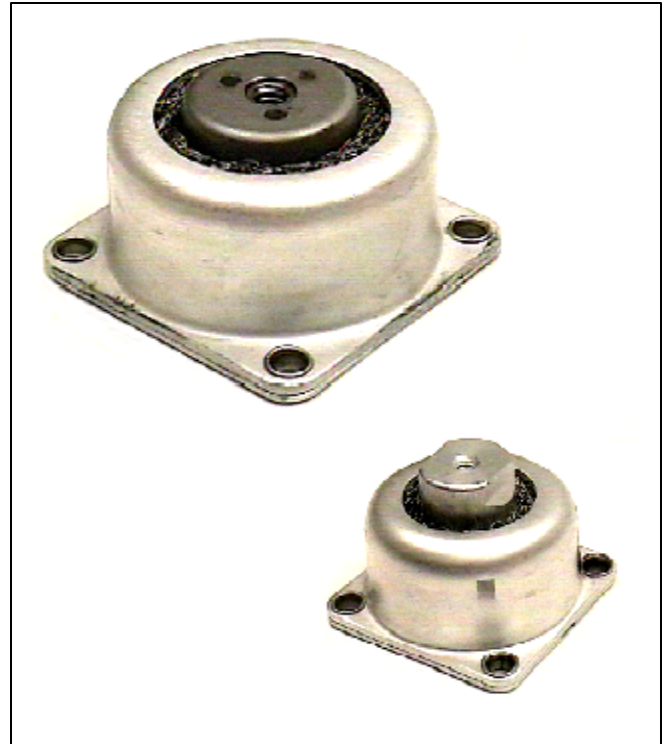


WM1201 & 1202 SERIES

Natural frequency	15-25 Hz
Transmissibility at resonance	4.0
Resilient element	Steel cushion
Metal parts	Aluminum/Stainless steel
Operating temperature	-100 deg. F to +400 deg. F (-75 deg. C to + 205 deg. C)
Weight	1.4 - 4.4 oz.
Part Number	Load rating (lbs.)
WM1201-1	1.0 - 3.0
WM1201-2	2.5 - 5
WM1201-3	5 - 10
WM1202-1	2 - 6
WM1202-2	5.0 - 12
WM1202-3	10 - 20
WM1202-4	17 - 40
WM1202-5	35 - 50



Applications

- 1 Airborne equipment
- 1 Control panels
- 1 Measuring instruments
- 1 Machine tools
- 1 Industrial equipment

Characteristics

- 1 Mount inner core is stainless steel. Housing and base are aluminum

- 1 Mounts exhibit an axial-to-radial stiffness ratio of 3:1
- 1 Good damping
- 1 Structural strength corresponds to a continuous loading of 10g's

Environment

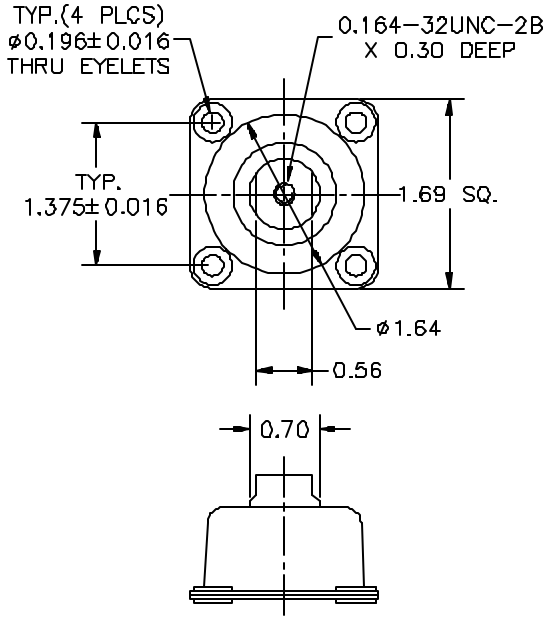
- 1 Operational temperature range of -100°F to +400°F (-75°C to 205°C)
- 1 All metal construction
- 1 Resist fuels, hydraulic oils, fluids, ozone, sand and dust, or other adverse environments

Installation

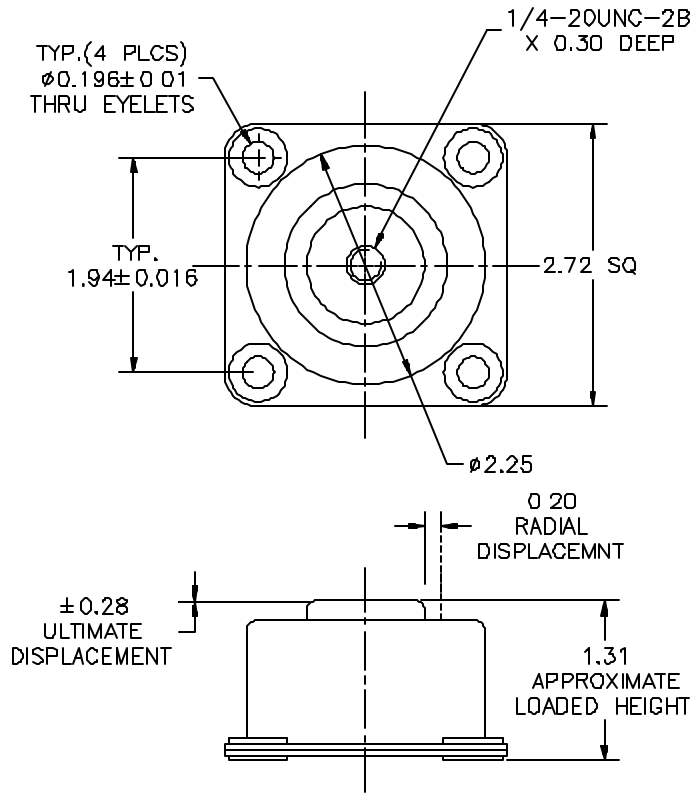
- 1 No special tools required
- 1 Standard sizes threaded center core and four (4) through holes at the base

How to order

- 1 Standard mount: see table
- 1 For non standard items, contact Shock-Tech.



WM1201 SERIES



WM1202 SERIES

