

AIR MOUNT

Natural frequency	3-5 HZ
Transmissibility at resonance	4 Max.
Resilient element	Neoprene
Metal parts	Structural Steel
Operating temperature	- 20° F to +180° F

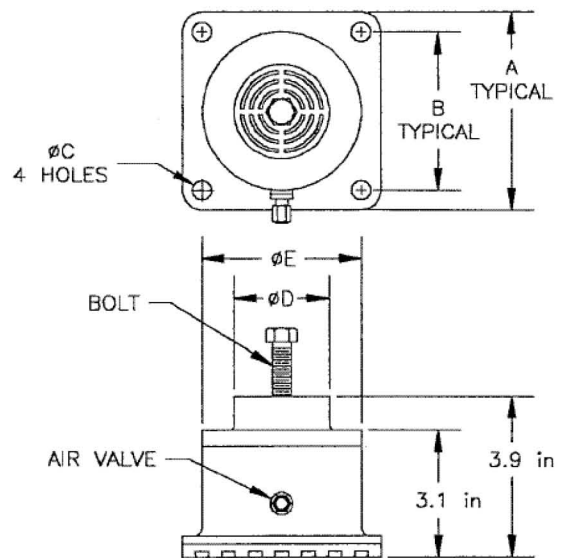


Characteristics

- High lateral stability
- Low maintenance
- Extends machinery life
- Low static deflection, drift, and permanent set
- Provides acoustic isolation
- Attenuates transmitted vibration

Applications

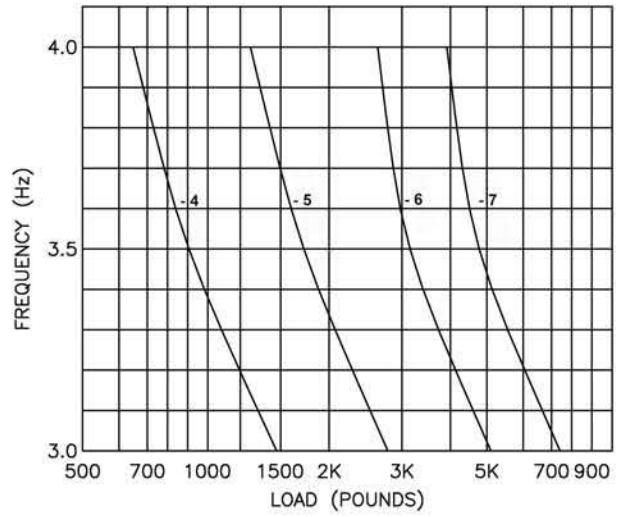
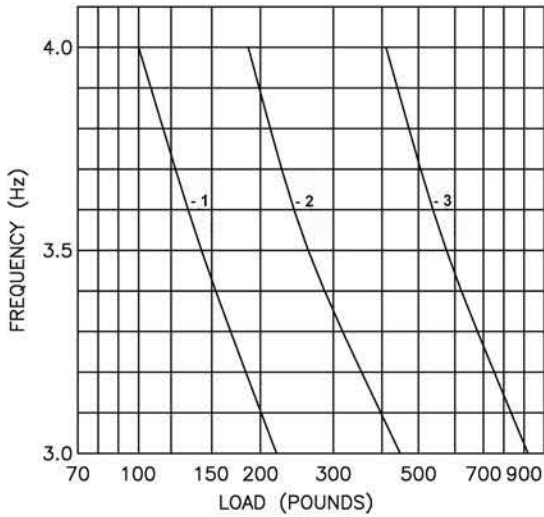
- Motors, pumps, fans and blowers, air compressors
- Transformers
- Industrial equipment, tools and machinery
- Rotating machinery
- Shipboard equipment
- COTS Shipboard
- CMM Machinery
- Forging hammers



Part Number	Load range (lbs)	Part Dimensions (in)					Bolt Size	Weight (lbs.)
		A	B	C	D	E		
AIRMT-1	100-200	4.92	3.94	.47	1.97	3.94	M10 X 40	4.2
AIRMT-2	200-400	4.92	3.94	.47	2.36	3.94	M12 X 50	4.4
AIRMT-3	400-800	6.30	4.92	.47	3.54	5.43	M12 X 50	7.7
AIRMT-4	800-1500	7.87	6.30	.47	4.33	6.46	M12 X 50	11.7
AIRMT-5	1400-2500	9.84	7.87	.55	5.91	8.35	M16 X 60	15.4
AIRMT-6	2400-4500	13.78	11.81	.55	9.45	12.36	M16 X 60	34.2
AIRMT-7	4000-7500	17.72	15.75	.55	12.99	16.22	M16 X 60	83.3

AIR MOUNT

FREQUENCY Vs. LOAD



FREQUENCY Vs PRESSURE

