

CP11, CP12 & CP13 SERIES

Natural frequency	10-25Hz	
Transmissibility at resonance	4 Max.	
Axial/Radial frequency ratio	1:1 approx.	
Resilient element	VHDS Silicone	
Metal parts	Stainless steel	
Operating temperature	-67 to +300 deg.F (Silicone)	
Weight	CP11: 0.28 oz. CP12: 0.88 oz. CP13: 2.2oz.	
Part Number	Minimum Load	Max. Load
CP11-S33	0.1 lbs	0.4 lbs
CP11-S38	0.2 lbs	0.9 lbs
CP11-S42	0.3 lbs	1 lbs
CP11-S48	0.3 lbs	1.5 lbs
CP11-S63	0.4 lbs	2 lbs
CP11-S72	0.5 lbs	2.5 lbs
CP11-S77	0.6 lbs	2.7 lbs
CP12-S33	0.2 lbs	1.5 lbs
CP12-S38	0.4 lbs	2.2 lbs
CP12-S42	0.5 lbs	2.8 lbs
CP12-S48	0.7 lbs	3 lbs
CP12-S63	0.9 lbs	3.8 lbs
CP12-S72	1.1 lbs	4.4 lbs
CP12-S77	1.1 lbs	5 lbs
CP13-S38	0.6 lbs	2 lbs
CP13-S42	0.9 lbs	2.6 lbs
CP13-S48	1.1 lbs	3.3 lbs
CP13-S63	1.8 lbs	5 lbs
CP13-S72	2 lbs	6 lbs
CP13-S77	2.5 lbs	7 lbs



Applications

- 1 Airborne equipment
- 1 Missile electronics
- 1 Electronic and electric components

Characteristics

- 1 Lightweight
- 1 Maximum vibration amplitude of .10 D.A. on the CP13 isolator series
- 1 Radial-to-axial stiffness ratio of approximately 1:1

Environment

- 1 VHDS Silicone elastomer operates from - 67°F to + 300°F
- 1 Fungus and ozone resistant
- 1 Meets environmental requirements of MIL-E-5400

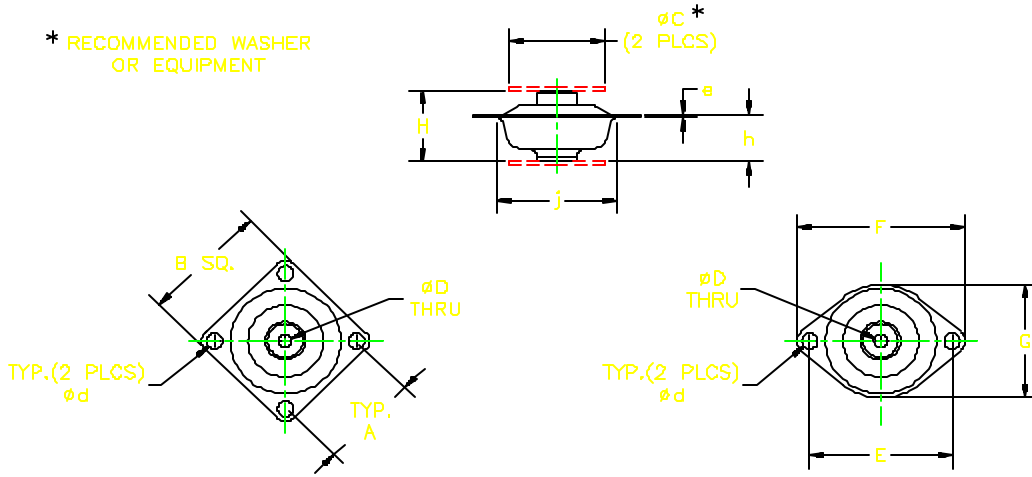
Installation

- 1 No special tools required
- 1 Install with snubber washers for fail safe requirement

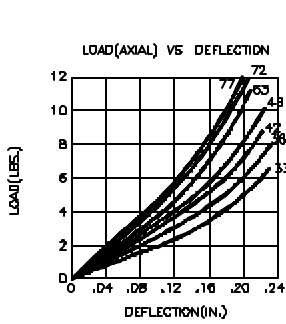
How to order

- 1 See the load rating table for elastomer and isolator size selections
- 1 Alternate materials and finishes are available
- 1 Standard center plate: square, 4 holes, no suffix
- 1 Optional center plate: diamond shape, 2 holes, add suffix DS (available for CP11 only)
- 1 Also available in Neoprene and Natural Rubber
- 1 For non standard items, contact Shock-Tech.

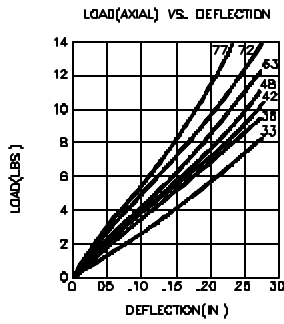
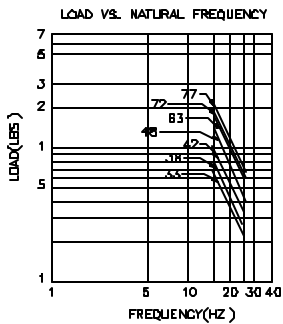
* RECOMMENDED WASHER OR EQUIPMENT



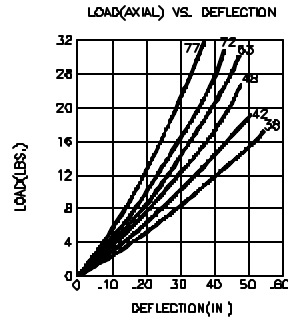
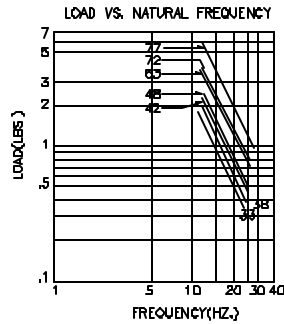
Part No.	Dimensions in inches											
	A	B	øC	øD	E	F	G	H	ød	e	h	j
CP11	1.00	1.26	0.94	0.172	1.41	1.67	1.18	0.75	0.16	0.03	0.49	1.00
CP12	1.375	1.75	1.10	0.23	1.94	2.40	1.35	1.00	0.18	0.06	0.67	1.50
CP13	1.94	2.38	1.70	0.27	2.74	3.30	2.00	1.42	0.22	0.08	0.87	2.05



CP11



CP12



CP13

