

WM583 & WM584 SERIES

Natural frequency	3.5 to 4 Hz	
Axial/Radial stiffness ratio	1:1.5 approx.	
Vibration amplitude	0.7 D.A. Max	
Metal parts	Steel	
Operating temperature	-70 to 300 deg.C for -0X	
	-50 to 150 deg.C for -1X	
Weight	WM583: 66 lbs	
	WM584: 90 lbs	
Without damping	With damping	Load Rating
WM583-01	WM583-11	700-1100 lbs
WM583-02	WM583-12	1100-1700 lbs
WM583-03	WM583-13	1500-2200 lbs
WM583-04	WM583-14	2000-3300 lbs
WM584-01	WM584-11	3300-4500 lbs
WM584-02	WM584-12	4500-6500 lbs
WM584-03	WM584-13	6500-9000 lbs
WM584-04	WM584-14	9000-11000 lbs



Applications

- 1 Shipboard bridges and superstructures
- 1 Shipboard auxilliary equipment, compressors, pumps
- 1 Marine propulsion systems
- 1 Marine and land based generator sets

Characteristics

- 1 Withstands large amplitude vibration inputs.
- 1 0.7 inches D.A. maximum
- 1 3.5 to 4 Hz vibration natural frequency under nominal load
- 1 Available in two versions: with or without damping. Damping is about 3 to 5% of critical on the damped version
- 1 Withstands 5 G constant acceleration

Environment

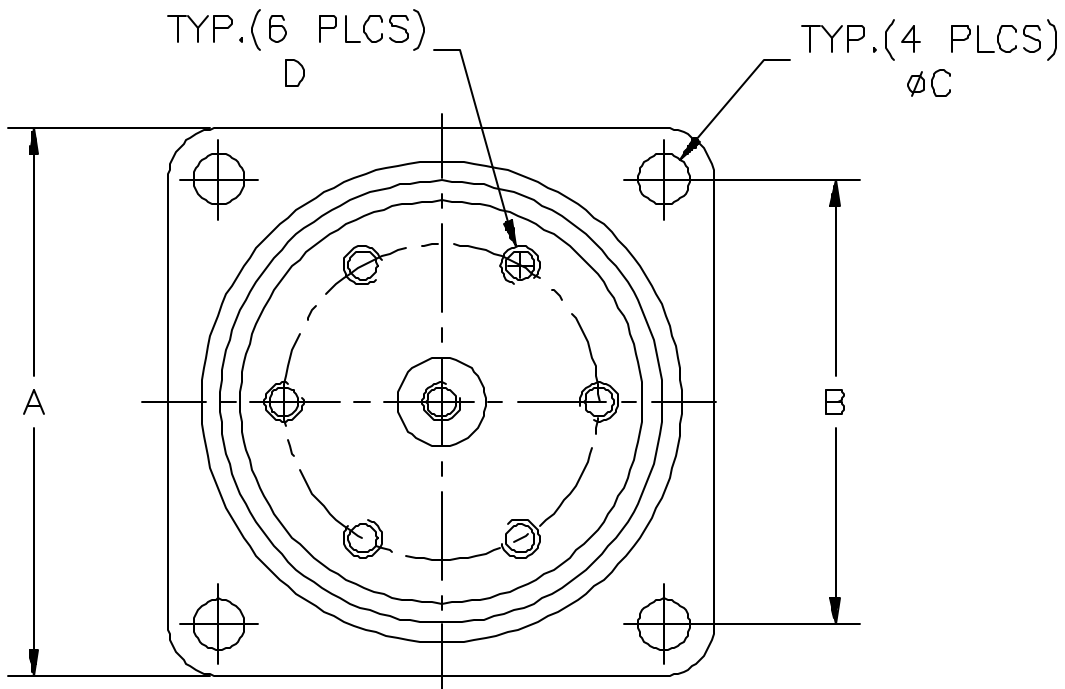
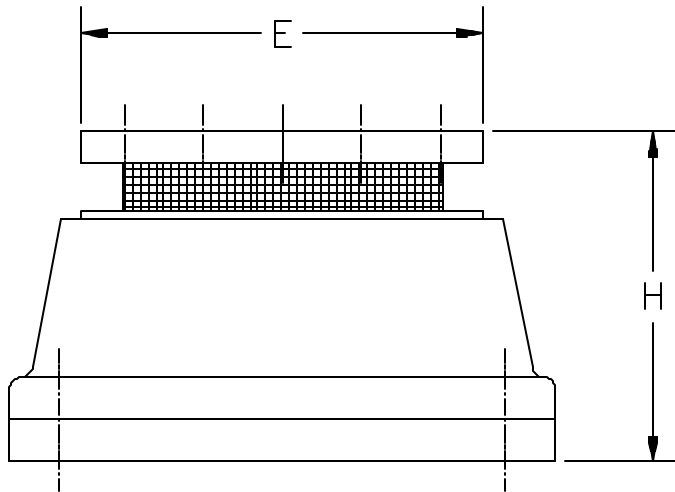
- 1 Corrosion, fluid and oil resistant
- 1 All metal construction

Installation

- 1 No special tools required
- 1 Base (compression) mounting

How to order

- 1 See load rating table for standard isolator



Part No	Dimensions in inches					
	A	B	C DIA	D DIA	E	H
WM583	8.66	6.69	0.67	M16 on a 4.72 dia	6.30	5.60
WM584	10.24	8.35	0.87	M20 on a 6.10 dia	7.87	7.00