

WM151-152 SERIES

Natural frequency	4.5 to 6 HZ	
Resilient element	Steel / Stainless Steel	
Operating temperature	-90 to 550 deg.F	
Weight	WM 151 Series 24.6 oz.	
	WM 152 Series 56.3 oz.	
Part Number	Axial Static Loads in Lbs.	Maximum Dynamic Compression Load in Lbs.
WM151-01	88 - 132	396
WM151-02	132 - 198	594
WM151-03	198 - 297	880
WM152-01	279 - 517	1540
WM152-02	517 - 770	2310

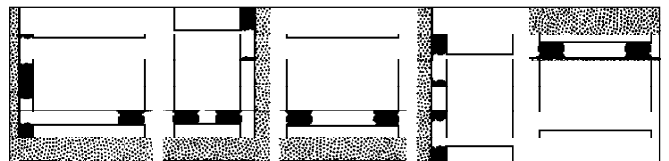


Environment

- All metal construction is resistant to oils and and operates in a temperature range of -90°F and +550°F.

Installation

- Refer to drawing for proper installation method
- Center bolt torquing limits in accordance with standards.



Applications

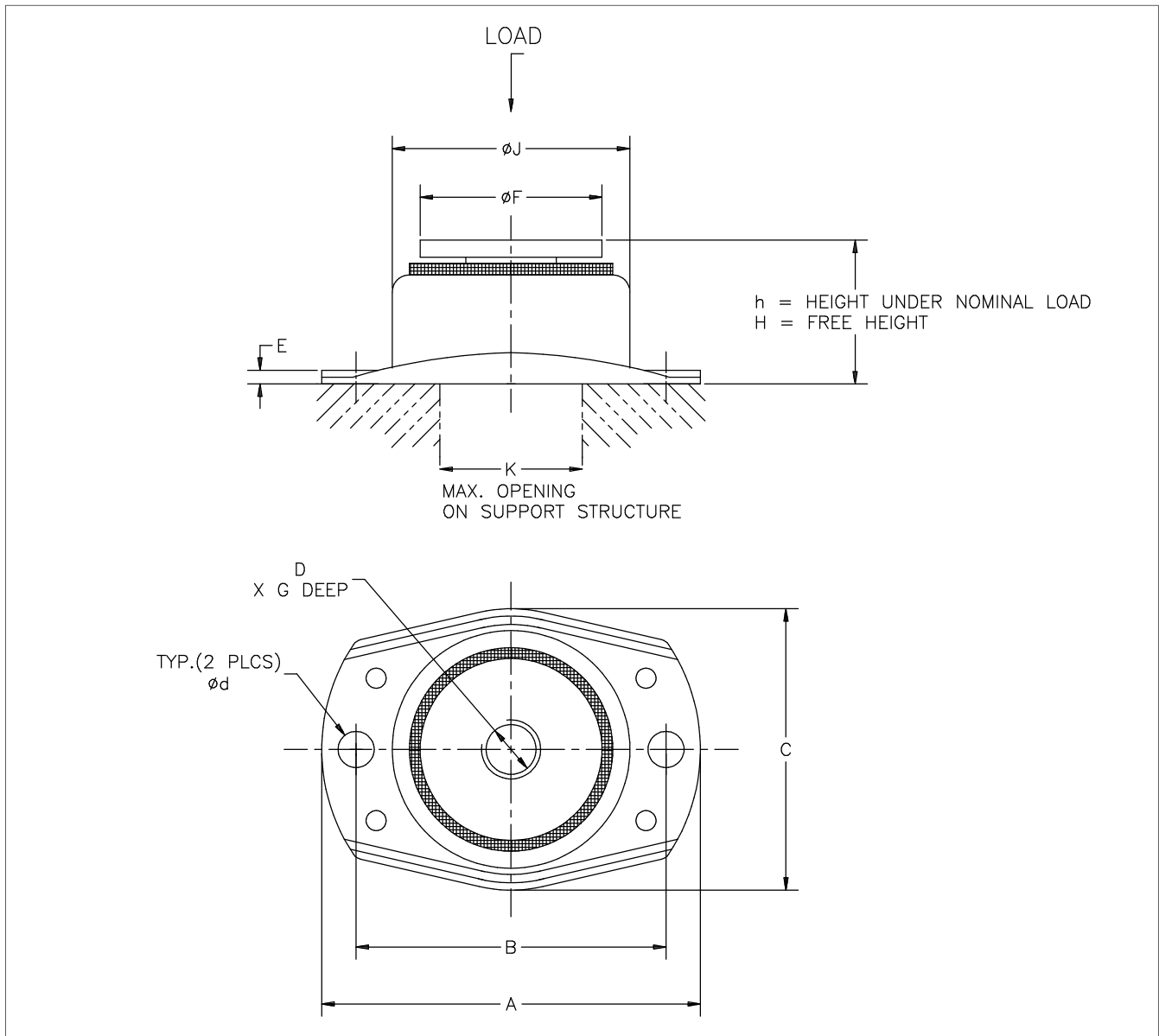
- Heavy-duty vehicles and large trucks
- Shipboard equipment
- Construction equipment
- Railway rolling stock
- Motors, pumps, fans, electrical power supply units
- Stationary rotating machines (600 rpm and over)

Characteristics

- All metal construction
- Wide load range for each isolator
- Long service life

How to order

- See table



Part No	Dimensions in inches											
	A	B	C	D	E	F	G	H	J	K	d	h
WM 151 Series	4.33	3.60	3.55	M12	0.20	2.00	1.50	2.60	2.70	1.50	0.40	2.26
WM 152 Series	6.00	5.00	4.88	M20	0.28	3.00	2.00	2.50	3.80	2.40	0.55	2.00

SHOCK TECH
Solution For Shock & Vibration Control

360 Route 59 - Monsey, NY 10952 - **Web:** shocktech.info
Tel: 845-368-8600 - **Fax:** 845-368-8799 - **E-mail:** info@shocktech.com

WM151-152 SERIES