

# CUP 62 SERIES

Natural frequency	20 - 45 Hz	
Transmissibility at resonance	4 Max. (VHDS Silicone) 10 Max. (Natural Rubber)	
Axial/Radial frequency ratio	1.1:1 approx.	
Resilient element	Chlorobutyl, Neoprene, Natural Rubber, VHDS Silicone	
Metal parts	Aluminum or Steel	
Operating temperature	Silicone : -67 to +300 deg.F	
	Neoprene : -20 to +180 deg.F	
Weight	4 lbs	
Part Number	Load Rating (lbs)	
	Vehicular	Stationary
CUP62-[ ]01	65 to 100	250
CUP62-[ ]02	100 to 155	400
CUP62-[ ]03	155 to 200	650
CUP62-[ ]04	200 to 285	900



## Environment

- Silicone operating temperature range of -67°F to +300°F (-55°C to +150°C).
- Other materials available such as Nitrile, when oil resistance is required.
- Meets the requirements of MIL-S-901C (shock), and MIL-STD-202 (salt spray, moisture, solvents)

## Applications

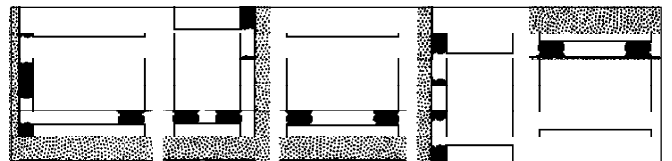
- Vehicular electronics
- Motors, pumps, fans and blowers
- Transformers
- Shipboard equipment
- Aircraft/missile electronics and avionics

## Characteristics

- All-Attitude. Can be loaded radially or axially, tension and compression
- Rugged, fail-safe construction
- Low-profile type mount

## Installation

- No special tools required
- Can be mounted in pairs to increase static deflection and reduce natural frequency
- Typical Mounting Configurations :

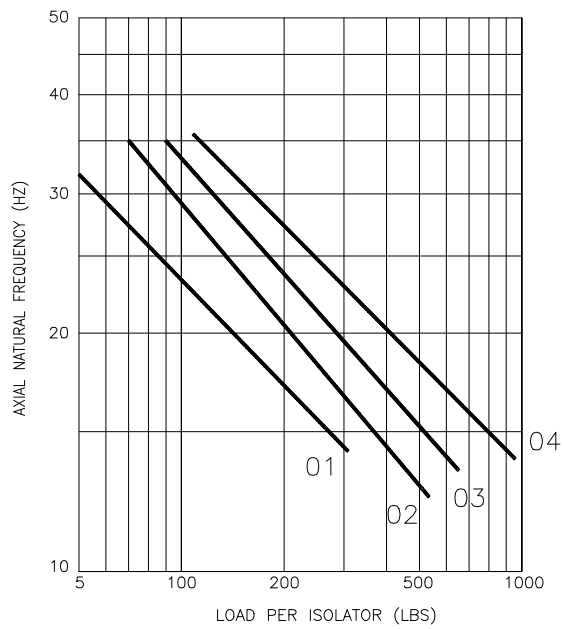
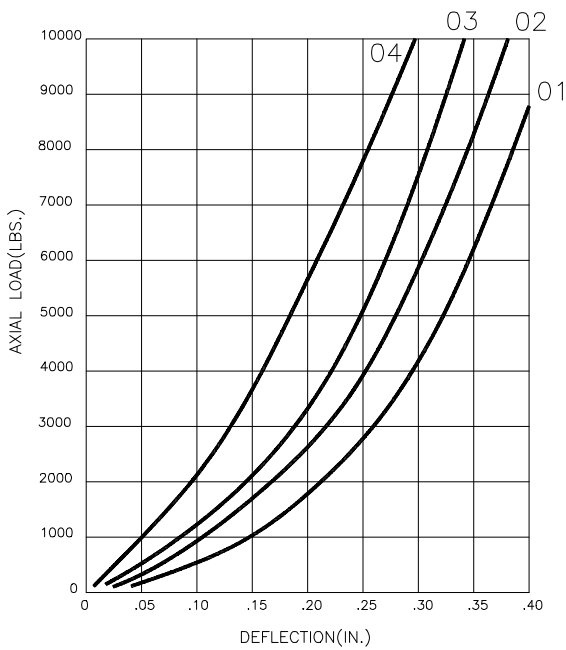
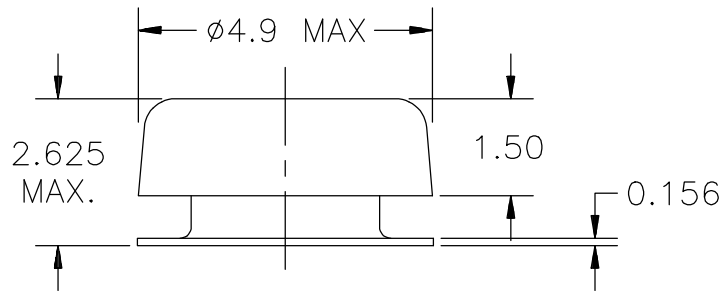
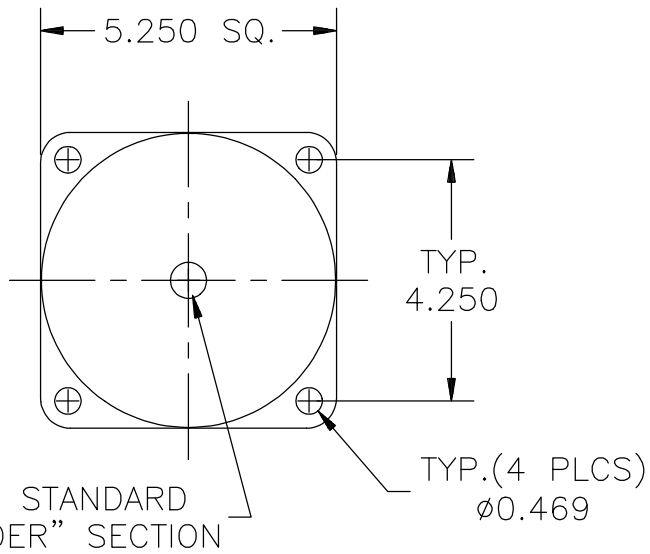


## HOW TO ORDER

Supplied with 5/8 -11UNC-2B center "C"\*, material Steel - Zinc plated "S" \* as standard

Basic Model Number :	Elastomer :	Load :	Center Hole :	Metal Parts :
CUP62	S = Silicone N = Neoprene R = Natural Rubber C = Chlorobutyl	Refer to load rating chart above : 01, 02, 03 or 04	C = tapped 5/8-11* UNC-2B M = 16mm L = Thru hole	S = Steel, Zinc plated finish is standard. A = Aluminum
<b>Example : CUP62-</b>	<b>S</b>	<b>02</b>	<b>C</b>	<b>S</b>

For non standard items, contact Shock-Tech.  
Specifications are subject to change without notice.



**SHOCK TECH**  
Solution For Shock & Vibration Control

360 Route 59 - Monsey, NY 10952 - **Web:** shocktech.info  
**Tel:** 845-368-8600 - **Fax:** 845-368-8799 - **E-mail:** info@shocktech.com

**CUP 62 SERIES**

