

CUP 32 SERIES

Natural frequency	20-45 Hz	
Transmissibility at resonance	4 Max. (VHDS Silicone) 10 Max. (Natural Rubber)	
Axial/Radial frequency ratio	1.25:1 approx.	
Resilient element	Chlorobutyl, Neoprene, Natural Rubber, VHDS Silicone	
Metal parts	Aluminum or Steel	
Operating temperature	Silicone : -67 to +300 deg.F (-55 to +150 deg.C)	
	Neoprene : -20 to +180 deg.F (-30 to +82 deg.C)	
Weight	6 oz. with steel metal parts	
	3.2 oz. with aluminum metal parts	
Part Number	Load Rating (lbs)	
	Vehicular	Stationary
CUP32-[]01	7.5 to 14.5	7.5 to 20
CUP32-[]02	14.5 to 24.5	14.5 to 30
CUP32-[]03	24.5 to 37.5	24.5 to 70
CUP32-[]04	37.5 to 60	37.5 to 100



Environment

- Silicone operating temperature range of -67°F to +300°F (-55°C to +150°C).
- Other materials available such as Nitrile, when oil resistance is required.
- Meets the requirements of MIL-S-901 (Shock) and MIL-STD -202 (salt, spray, humidity, solvent, etc.)

Installation

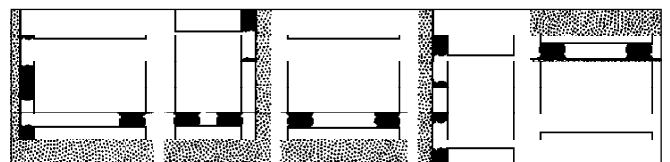
- No special tools required
- Can be mounted in pairs to increase static deflection and reduce natural frequency
- Typical Mounting Configurations =

Applications

- Vehicular electronics
- Motors, Pumps, Fans and blowers
- Transformers, Power supplies
- Shipboard equipment
- Aircraft/missile electronics and avionics

Characteristics

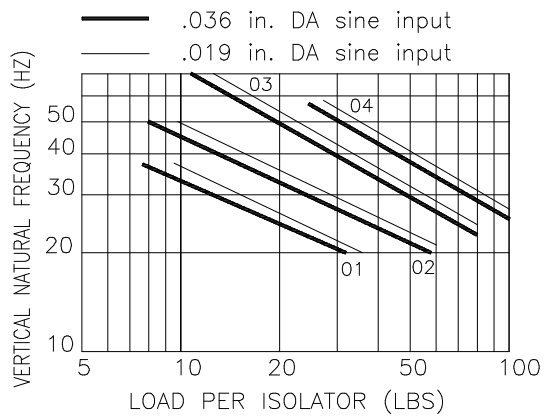
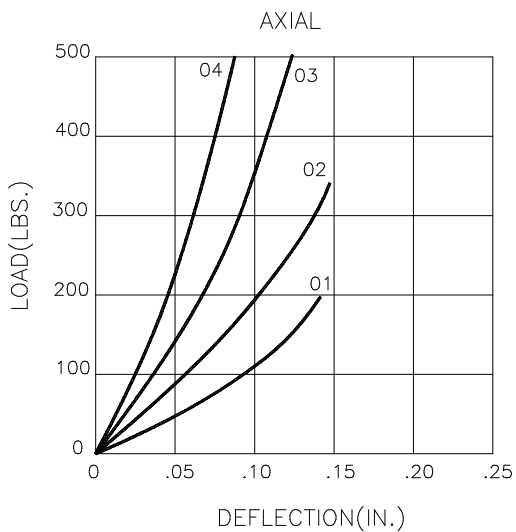
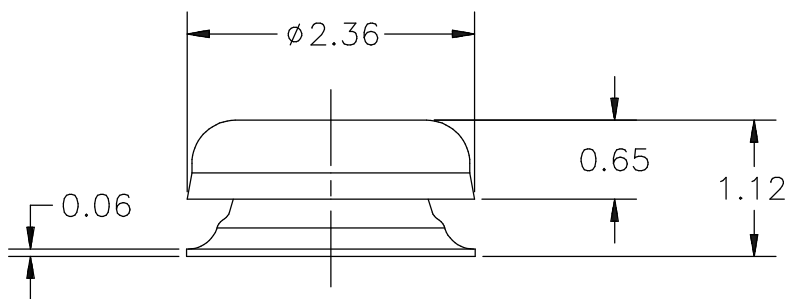
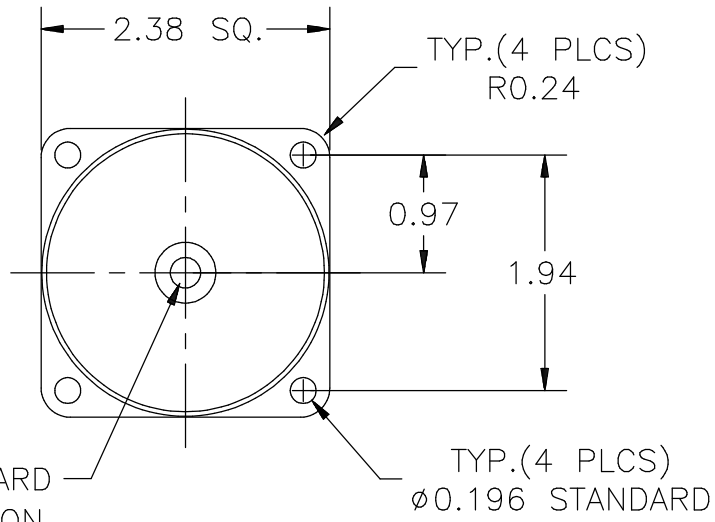
- All-Attitude. Can be loaded radially or axially, tension and compression
- Rugged, fail-safe construction
- Low-profile type mount



HOW TO ORDER

Supplied with 1/4 - 20 UNC-2B center "C"*, material Steel - Zinc plated "S" * as standard

Basic Model Number :	Elastomer :	Load :	Center hole :	Metal Parts :
CUP 32	S = Silicone N = Neoprene R = Natural Rubber C = Chlorobutyl	Refer to load rating chart above : 01, 02, 03 or 04	C = tapped 1/4-20* UNC-2B F = tapped 1/4-28 UNF-2B M = tapped 6mm L = thru hole	S = Steel, Zinc * plated finish is standard. A = Aluminum
Example : CUP32-	S	01	C	A



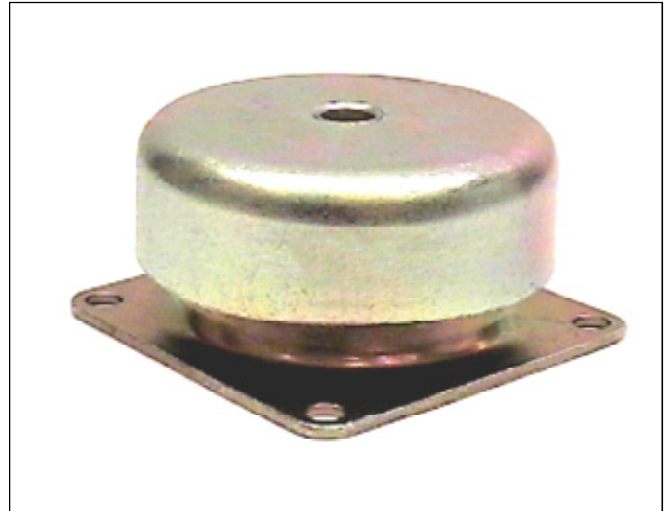
SHOCK TECH
Solution For Shock & Vibration Control

360 Route 59 - Monsey, NY 10952 - Web: shocktech.info
Tel: 845-368-8600 - Fax: 845-368-8799 - E-mail: info@shocktech.com

CUP 32 SERIES

CUP 42 SERIES

Natural frequency	20-45 Hz	
Transmissibility at resonance	4 Max. (VHDS Silicone) 10 Max. (Natural Rubber)	
Axial/Radial frequency ratio	1.1:1 approx.	
Resilient element	Chlorobutyl, Neoprene, Natural Rubber, VHDS Silicone	
Metal parts	Aluminum or Steel	
Operating temperature	Silicone : -67 to +300 deg.F	
	Neoprene : -20 to +180 deg.F	
Weight	1. lb with steel metal parts 7 oz. with aluminum metal parts	
Part Number	Load Rating (lbs)	
	Vehicular	Stationary
CUP42-[]01	15 to 30	15 to 50
CUP42-[]02	30 to 50	30 to 100
CUP42-[]03	50 to 80	50 to 150
CUP42-[]04	80 to 105	150 to 250



Environment

- Silicone operating temperature range of -67°F to +300°F (-55°C to +150°C).
- Other materials available such as Nitrile, when oil resistance is required.
- Meets the requirements of MIL-S-901C (shock), and MIL-STD-202 (salt spray, moisture, solvents)

Applications

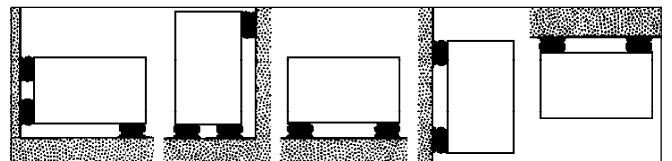
- Vehicular electronics
- Motors, Pumps, Fans and blowers
- Transformers
- Shipboard equipment
- Aircraft/missile electronics and avionics

Characteristics

- All-Attitude. Can be loaded radially or axially, tension and compression
- Rugged, fail-safe construction
- Low-profile type mount

Installation

- No special tools required
- Can be mounted in pairs to increase static deflection and reduce natural frequency
- Typical Mounting Configurations :



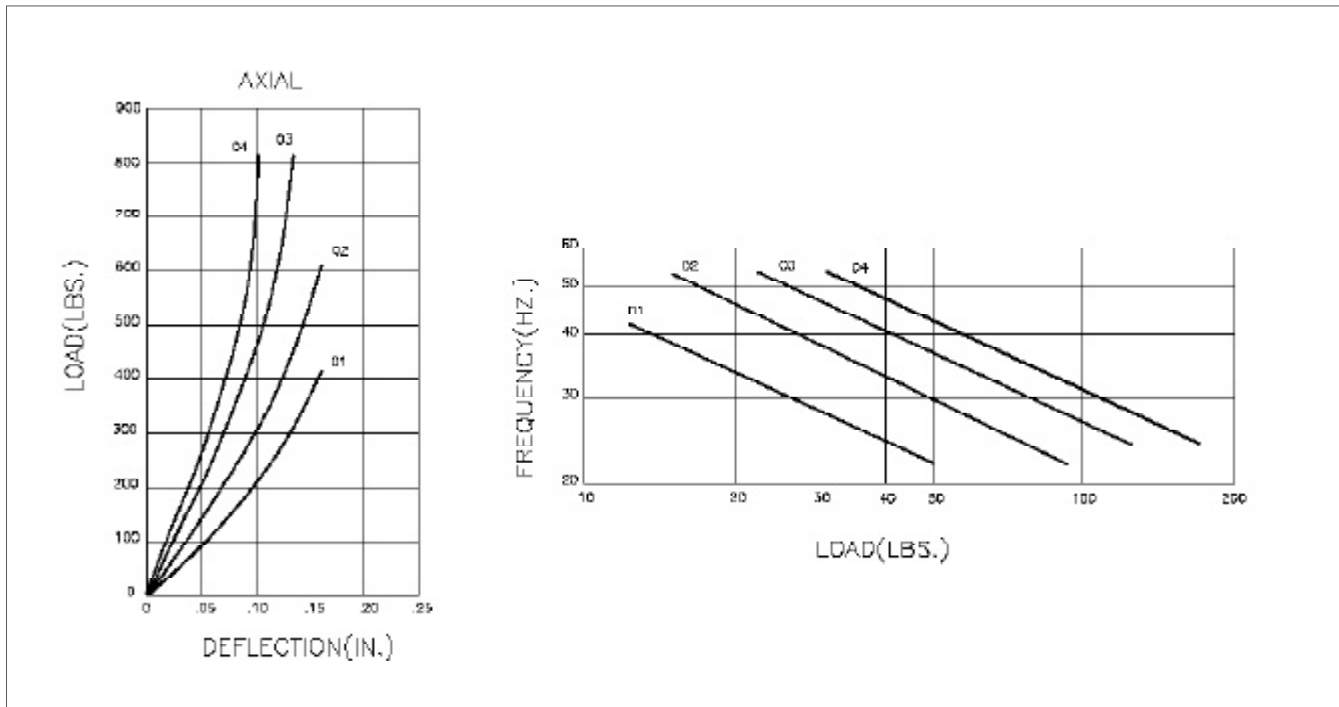
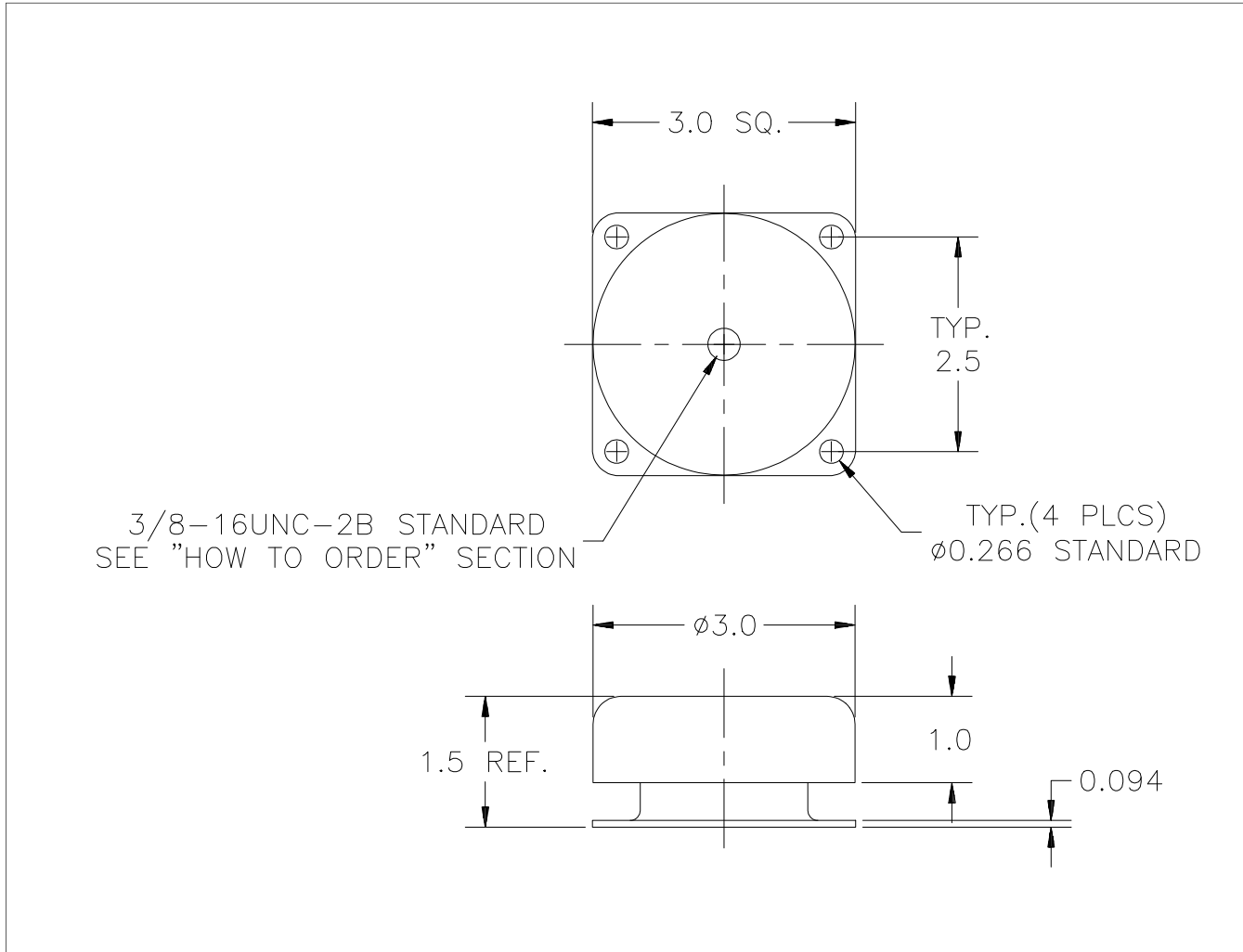
HOW TO ORDER

Supplied with 3/8 - 16UNC-2B center "C" , material Steel - Zinc plated "S" * as standard*

Basic Model Number :	Elastomer :	Load :	Center Hole :	Metal Parts :
CUP 42	S = Silicone N = Neoprene R = Natural Rubber C = Chlorobutyl	Refer to load rating chart above : 01, 02, 03 or 04	C = tapped 3/8-16* UNC-2B F = tapped 3/8-24 UNF-2B M = 8mm L = Thru hole	S = Steel, Zinc* plated finish is standard. A = Aluminum
Example : CUP42-	S	02	C	S

For non standard items, contact Shock-Tech.

Specifications are subject to change without notice.



SHOCK TECH
Solution For Shock & Vibration Control

360 Route 59 - Monsey, NY 10952 - **Web:** shocktech.info
Tel: 845-368-8600 - **Fax:** 845-368-8799 - **E-mail:** info@shocktech.com

CUP 42 SERIES

CUP 62 SERIES

Natural frequency	20 - 45 Hz	
Transmissibility at resonance	4 Max. (VHDS Silicone) 10 Max. (Natural Rubber)	
Axial/Radial frequency ratio	1.1:1 approx.	
Resilient element	Chlorobutyl, Neoprene, Natural Rubber, VHDS Silicone	
Metal parts	Aluminum or Steel	
Operating temperature	Silicone : -67 to +300 deg.F	
	Neoprene : -20 to +180 deg.F	
Weight	4 lbs	
Part Number	Load Rating (lbs)	
	Vehicular	Stationary
CUP62-[]01	65 to 100	250
CUP62-[]02	100 to 155	400
CUP62-[]03	155 to 200	650
CUP62-[]04	200 to 285	900



Environment

- Silicone operating temperature range of -67°F to +300°F (-55°C to +150°C).
- Other materials available such as Nitrile, when oil resistance is required.
- Meets the requirements of MIL-S-901C (shock), and MIL-STD-202 (salt spray, moisture, solvents)

Applications

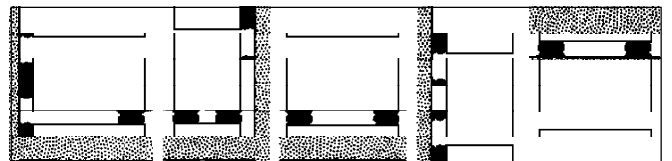
- Vehicular electronics
- Motors, pumps, fans and blowers
- Transformers
- Shipboard equipment
- Aircraft/missile electronics and avionics

Characteristics

- All-Attitude. Can be loaded radially or axially, tension and compression
- Rugged, fail-safe construction
- Low-profile type mount

Installation

- No special tools required
- Can be mounted in pairs to increase static deflection and reduce natural frequency
- Typical Mounting Configurations :

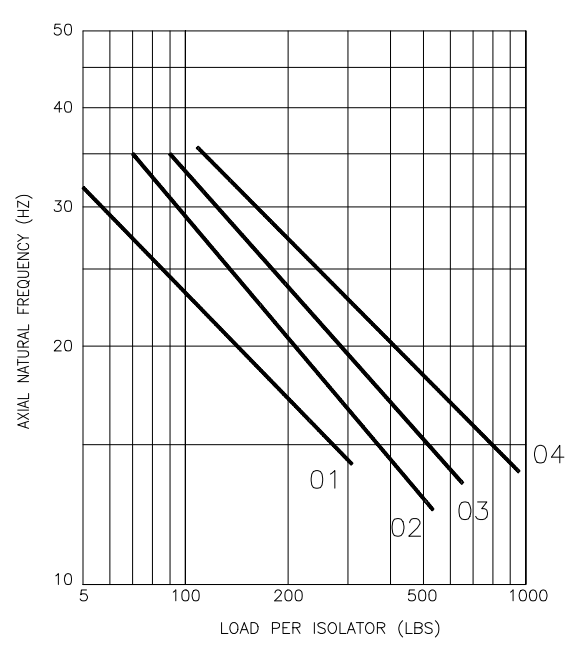
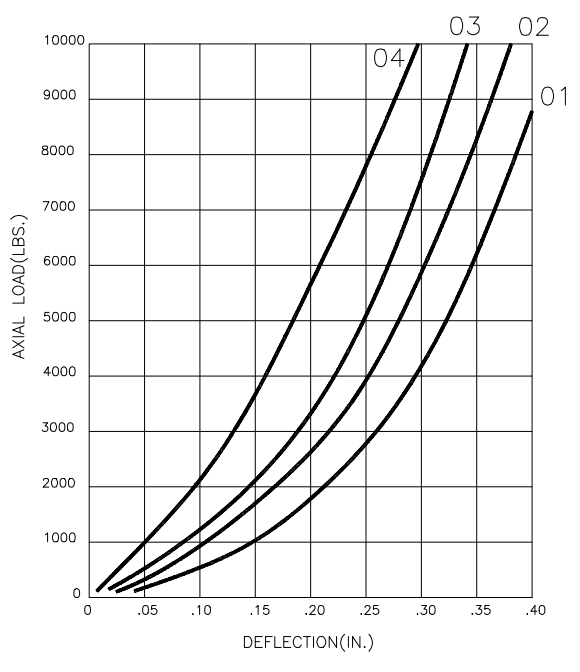
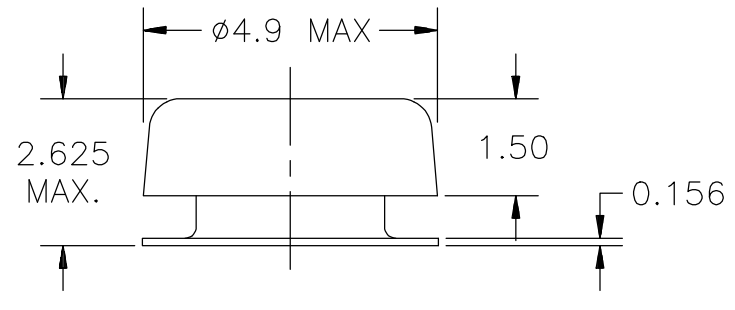
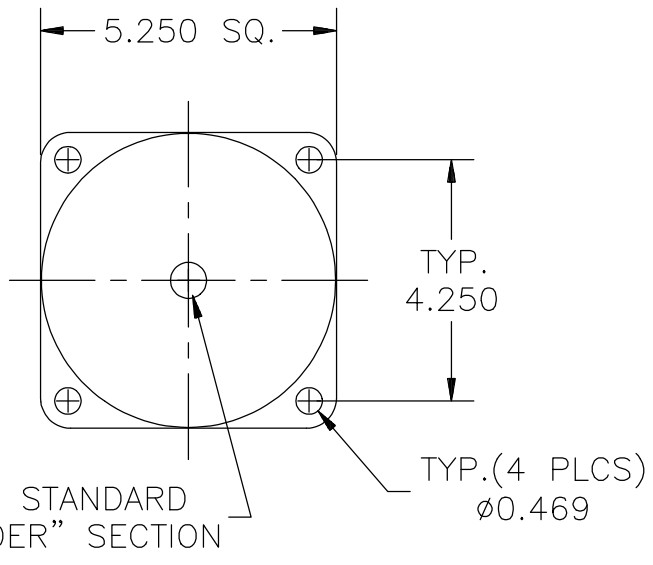


HOW TO ORDER

Supplied with 5/8 -11UNC-2B center "C"*, material Steel - Zinc plated "S" * as standard

Basic Model Number :	Elastomer :	Load :	Center Hole :	Metal Parts :
CUP62	S = Silicone N = Neoprene R = Natural Rubber C = Chlorobutyl	Refer to load rating chart above : 01, 02, 03 or 04	C = tapped 5/8-11* UNC-2B M = 16mm L = Thru hole	S = Steel, Zinc plated finish is standard. A = Aluminum
Example : CUP62-	S	02	C	S

For non standard items, contact Shock-Tech.
Specifications are subject to change without notice.



SHOCK TECH
Solution For Shock & Vibration Control

360 Route 59 - Monsey, NY 10952 - **Web:** shocktech.info
Tel: 845-368-8600 - **Fax:** 845-368-8799 - **E-mail:** info@shocktech.com

CUP 62 SERIES