

RB1, RB2, RB3, RB4 & RB5 SERIES

Natural frequency	10-20 Hz	
Transmissibility at resonance	10 Max.	
Resilient element	Neoprene	
Metal parts	Steel	
Operating temperature	-20 to +180 deg.F	
Mount Weight	RB1	1.5 oz
	RB2	5 oz
	RB3	11 oz
	RB4	1 lb 7.5 oz
	RB5	2 lb 14 oz



Environment

- 1 Neoprene elastomer is resistant to oils and ozone and operates in a temperature range between -20°F and +180°F (-30°C to +80°C)
- 1 Special elastomers available

Installation

- 1 Refer to drawing for proper installation method
- 1 Center bolt torquing limits in accordance with standards

How to order

Applications

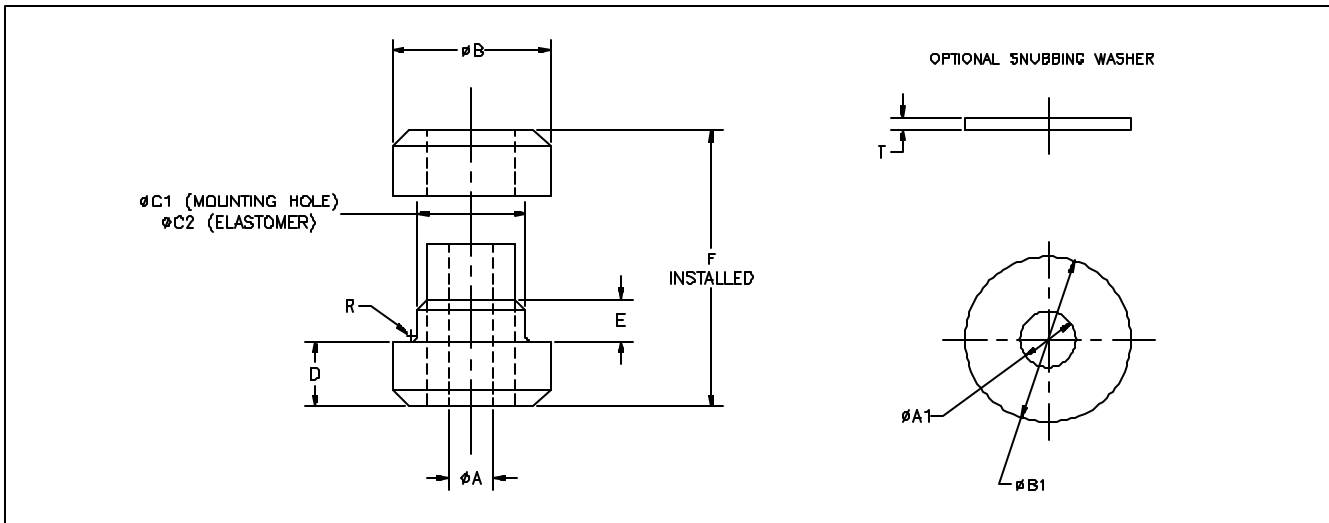
- 1 Heavy-duty vehicles and large trucks
- 1 Off-road equipment
- 1 Construction equipment
- 1 Electric motors and internal combustion engines
- 1 Vehicle cabs and seats
- 1 Radiators, heaters and gas tanks
- 1 Vehicular electronics and mobile shelters
- 1 Munitions storage

Characteristics

- 1 All-Attitude
- 1 Low cost
- 1 Protects against both vibration and shock



- 1 Standard:
- 1 See table
- 1 Option : For 1 snubbing washer add suffix W
For 2 snubbing washers, add suffix WW
- 1 For non standard items, contact Shock-Tech.
- 1 For washer only order W RB []



Part No	Dimensions in inches								Optional snubbing washer			
	A dia	B dia	C1 dia	C2 dia	D	E	F	R	P/N	A1 dia	B1 dia	T
RB1	0.391	1.31	0.75	0.79	0.485	0.36	1.25	0.04	RB1W	0.406	1.625	0.125
RB2	0.532	1.88	1.25	1.3	0.78	0.5	1.94	0.06	RB2W	0.531	2	0.125
RB3	0.657	2.55	1.5	1.58	0.9	0.75	2.43	0.09	RB3W	0.657	2.81	0.188
RB4	0.988	3.5	2.25	2.3	1	1	2.88	0.12	RB4W	0.988	3.88	0.25
RB5	1.063	4.88	2.5	2.55	1.25	1	3.38	0.12	RB5W	1.063	5.25	0.375
	LOAD RATING				RECOMMENDED INSTALLATION							
	Axial load (lbs)	Radial load (lbs)	Natural Frequency		Plate thickness (in)		Bolt size		Grade			
RB1-N01	40	20	15 Hz		.375		3/8		5			
RB1-N02	90	30										
RB1-N03	140	40										
RB1-N04	250	50										
RB1-N05	300	60										
RB2-N01	130	50	12 Hz		.50		1/2		8			
RB2-N02	175	65										
RB2-N03	240	90										
RB2-N04	380	165										
RB2-N05	630	280										
RB3-N01	210	90	11 Hz		.75		5/8		8			
RB3-N02	350	140										
RB3-N03	490	225										
RB3-N04	860	385										
RB3-N05	1330	680										
RB4-N01	270	135	10 Hz		1.00		7/8		8			
RB4-N02	510	230										
RB4-N03	770	345										
RB4-N04	1170	530										
RB4-N05	2100	975										
RB5-N01	1140	240	10 Hz		1.00		1.0		8			
RB5-N02	1930	340										
RB5-N03	2580	610										
RB5-N04	3540	830										
RB5-N05	4560	1410										

RB1, RB2, RB3, RB4 & RB5 SERIES