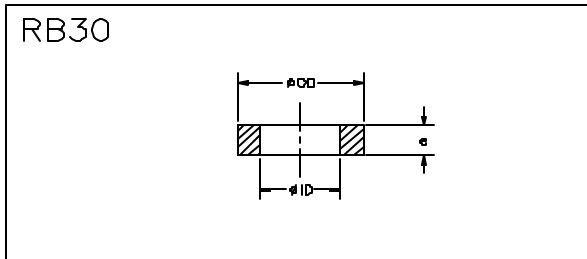
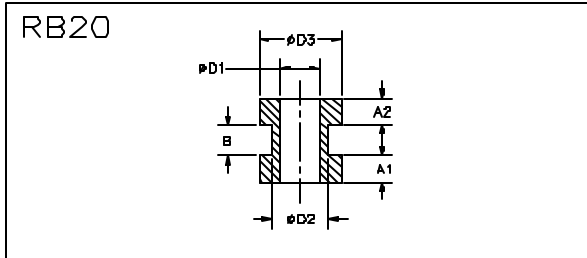
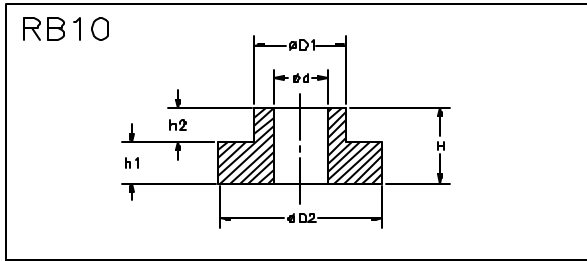


RB10, RB20 & RB30 SERIES



| P/N | d | D1 | D2 | H | h1 | h2 |
|-----------|------|------|------|-------|-------|------|
| RB10-2292 | 0.14 | 0.24 | 0.51 | 0.28 | 0.13 | 0.15 |
| RB10-0712 | 0.14 | 0.29 | 0.39 | 0.18 | 0.125 | 0.06 |
| RB10-3290 | 0.16 | 0.24 | 0.35 | 0.21 | 0.135 | 0.08 |
| RB10-0647 | 0.17 | 0.23 | 0.32 | 0.13 | 0.067 | 0.06 |
| RB10-2211 | 0.17 | 0.23 | 0.32 | 0.135 | 0.067 | 0.07 |
| RB10-0997 | 0.2 | 0.39 | 0.71 | 0.94 | 0.55 | 0.39 |
| RB10-2192 | 0.24 | 0.34 | 0.47 | 0.28 | 0.16 | 0.12 |
| RB10-2410 | 0.24 | 0.39 | 0.71 | 0.39 | 0.24 | 0.16 |
| RB10-2216 | 0.26 | 0.43 | 0.59 | 0.32 | 0.18 | 0.14 |
| RB10-0755 | 0.28 | 0.67 | 1.18 | 0.55 | 0.24 | 0.32 |
| RB10-2374 | 0.32 | 0.47 | 0.71 | 0.24 | 0.12 | 0.12 |
| RB10-2379 | 0.32 | 0.51 | 0.71 | 0.14 | 0.08 | 0.06 |
| RB10-2173 | 0.32 | 0.51 | 0.83 | 0.24 | 0.16 | 0.08 |
| RB10-0563 | 0.32 | 0.54 | 0.78 | 0.28 | 0.08 | 0.2 |
| RB10-0778 | 0.32 | 0.55 | 0.94 | 0.32 | 0.16 | 0.16 |
| RB10-2042 | 0.34 | 0.67 | 1.02 | 0.32 | 0.16 | 0.16 |
| RB10-2147 | 0.39 | 0.55 | 0.71 | 0.32 | 0.16 | 0.16 |
| RB10-0553 | 0.43 | 0.67 | 0.94 | 0.35 | 0.16 | 0.2 |
| RB10-0575 | 0.47 | 1.1 | 1.97 | 0.87 | 0.47 | 0.39 |
| RB10-2315 | 0.63 | 1.1 | 1.97 | 0.87 | 0.47 | 0.39 |
| RB10-3533 | 0.26 | 0.43 | 0.59 | 0.31 | 0.17 | 0.14 |
| RB10-3491 | 0.34 | 0.71 | 0.94 | 0.32 | 0.16 | 0.16 |
| RB10-3490 | 0.25 | 0.39 | 0.71 | 0.32 | 0.16 | 0.16 |
| RB10-0574 | 0.47 | 1.1 | 1.97 | 0.64 | 0.23 | 0.41 |
| RB10-8882 | 0.47 | 1.1 | 1.97 | 0.64 | 0.3 | 0.34 |

Applications

- 1 All purpose electronics
- 1 Avionics
- 1 Computers and communications equipment
- 1 Robotics

Characteristics

- 1 All-attitude, fail-safe
- 1 Low cost, easy to install

Environment

- 1 Operational temperature range of - 67°F to + 300°F (VHDS Material)

Installation

- 1 No special tools required

HOW TO ORDER

| Basic Model Number : | Elastomer : | Durometer : |
|-------------------------------|--|--|
| RB []-[]-[]-[] | - [] S = Silicone F = Fluorosilicone N = Neoprene I = Nitril R = Natural rubber C = Chlorobutyl | - [] [] 25, 33, 38, 42, 48, 55, 63, 72, 77, 85 |
| Example : RB 10 - 2173 | - S | - 42 |

| P/N | D1 | D2 | D3 | A1 | A2 | A3 |
|-----------|------|------|------|------|------|------|
| RB20-2364 | 0.16 | 0.24 | 0.32 | 0.09 | 0.09 | 0.06 |
| RB20-0648 | 0.17 | 0.23 | 0.32 | 0.07 | 0.07 | 0.06 |
| RB20-0576 | 0.2 | 0.32 | 0.47 | 0.08 | 0.08 | 0.16 |
| RB20-3258 | 0.32 | 0.47 | 0.71 | 0.22 | 0.22 | 0.24 |
| RB20-3295 | 0.32 | 0.47 | 0.71 | 0.22 | 0.22 | 0.12 |
| RB20-8839 | 0.32 | 0.47 | 0.71 | 0.05 | 0.22 | 0.24 |

| P/N | ID | OD | e |
|-----------|------|------|------|
| RB30-3291 | 0.16 | 0.35 | 0.13 |
| RB30-2061 | 0.16 | 0.47 | 0.16 |
| RB30-2062 | 0.16 | 0.32 | 0.2 |
| RB30-2024 | 0.2 | 0.87 | 0.16 |
| RB30-2025 | 0.2 | 0.59 | 0.16 |
| RB30-2401 | 0.24 | 0.71 | 0.24 |
| RB30-2281 | 0.24 | 0.79 | 0.16 |
| RB30-2282 | 0.24 | 0.47 | 0.24 |
| RB30-2402 | 0.26 | 0.71 | 0.57 |
| RB30-2403 | 0.26 | 0.53 | 0.39 |
| RB30-2453 | 0.26 | 0.46 | 0.1 |
| RB30-2216 | 0.26 | 0.59 | 0.18 |
| RB30-0590 | 0.28 | 0.47 | 0.24 |
| RB30-0591 | 0.28 | 0.63 | 0.32 |
| RB30-0754 | 0.28 | 1.18 | 0.24 |
| RB30-2404 | 0.28 | 1.18 | 0.12 |
| RB30-2148 | 0.3 | 0.45 | 0.29 |
| RB30-2149 | 0.3 | 0.69 | 0.24 |
| RB30-2454 | 0.31 | 0.46 | 0.31 |
| RB30-0588 | 0.32 | 0.87 | 0.16 |
| RB30-0607 | 0.32 | 0.71 | 0.24 |
| RB30-0608 | 0.32 | 0.71 | 0.32 |
| RB30-0609 | 0.32 | 1.02 | 0.39 |

| P/N | ID | OD | e |
|-----------|------|------|------|
| RB30-0777 | 0.32 | 0.94 | 0.16 |
| RB30-2405 | 0.32 | 0.63 | 0.16 |
| RB30-2406 | 0.32 | 0.51 | 0.16 |
| RB30-2045 | 0.34 | 1.02 | 0.16 |
| RB30-2330 | 0.35 | 1.42 | 0.24 |
| RB30-2181 | 0.37 | 0.79 | 0.24 |
| RB30-0584 | 0.39 | 0.87 | 0.24 |
| RB30-0585 | 1.34 | 1.34 | 0.24 |
| RB30-0586 | 0.39 | 1.34 | 0.47 |
| RB30-0613 | 0.39 | 0.79 | 0.24 |
| RB30-0614 | 0.39 | 1.02 | 0.47 |
| RB30-0615 | 0.39 | 1.02 | 0.47 |
| RB30-0643 | 0.39 | 1.34 | 0.32 |
| RB30-0644 | 0.39 | 1.18 | 0.47 |
| RB30-2146 | 0.39 | 0.83 | 0.16 |
| RB30-2345 | 0.39 | 0.94 | 0.24 |
| RB30-2346 | 0.39 | 0.83 | 0.24 |
| RB30-2328 | 0.43 | 1.42 | 0.24 |
| RB30-2329 | 0.43 | 1.42 | 0.16 |
| RB30-0694 | 0.47 | 0.67 | 0.16 |
| RB30-0695 | 0.47 | 0.71 | 0.16 |
| RB30-0738 | 0.47 | 1.97 | 0.47 |
| RB30-2407 | 0.55 | 0.87 | 0.26 |
| RB30-2408 | 0.63 | 1.14 | 0.28 |
| RB30-2409 | 0.79 | 1.26 | 1.41 |
| RB30-0782 | 0.83 | 1.14 | 0.2 |
| RB30-0744 | 1.22 | 1.42 | 0.12 |
| RB30-0745 | 1.42 | 1.73 | 0.12 |
| RB30-3500 | 0.25 | 0.71 | 0.16 |
| RB30-0737 | 0.47 | 1.97 | 0.23 |
| RB30-8882 | 0.47 | 1.97 | 0.3 |